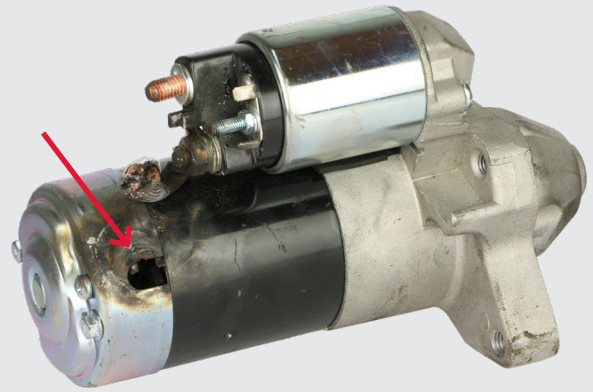
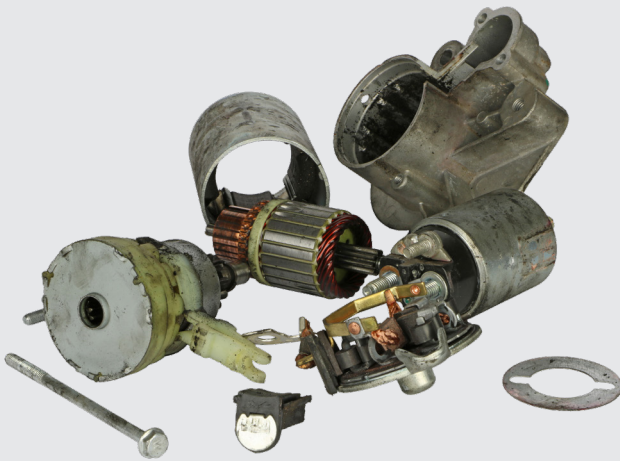


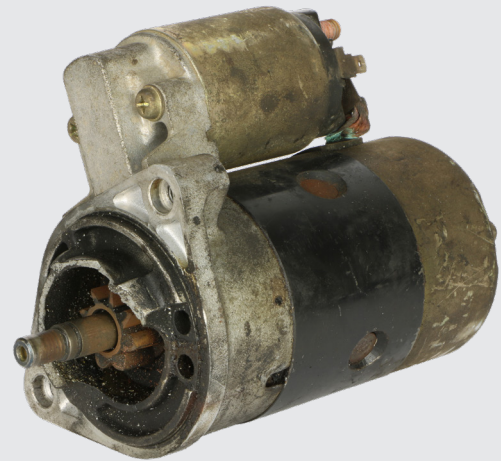
**Overheated drive / shaft**



**Burnt**



**Dismantled**



**Damaged housing,  
bracket or fixation**

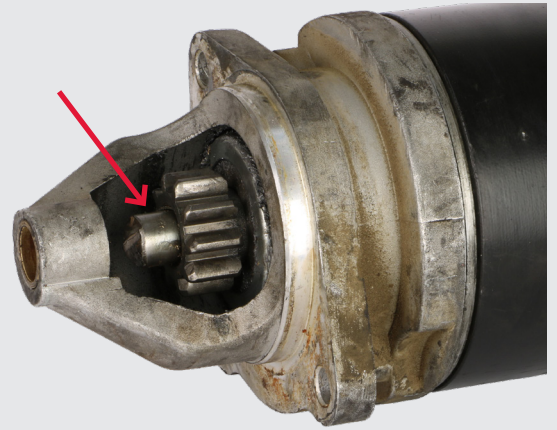
## Core acceptance criteria Starters: Rejected

### Rejected

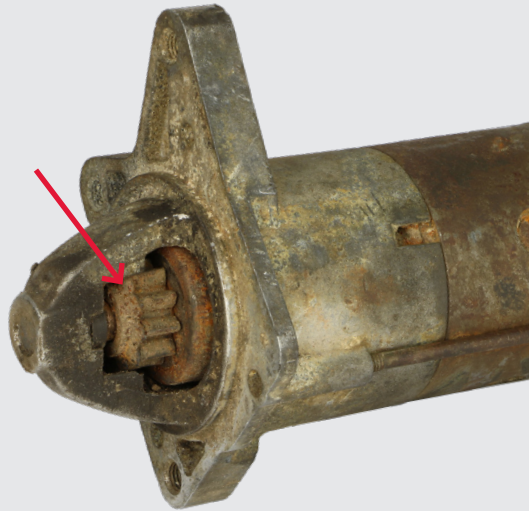
1. Cores must be returned in the original box.
2. Protecting items (caps, covers, foam protectors etc.) must be installed on the core in the same way as they were installed on the remanufactured part.
3. Please view more details on our core acceptance criteria on our homepage.



Damaged solenoid / plug



Damaged armature / shaft



Damaged teeth

## Core acceptance criteria Starters: Reduced

Reduced

1. Cores must be returned in the original box.
2. Protecting items (caps, covers, foam protectors etc.) must be installed on the core in the same way as they were installed on the remanufactured part.
3. Please view more details on our core acceptance criteria on our homepage.