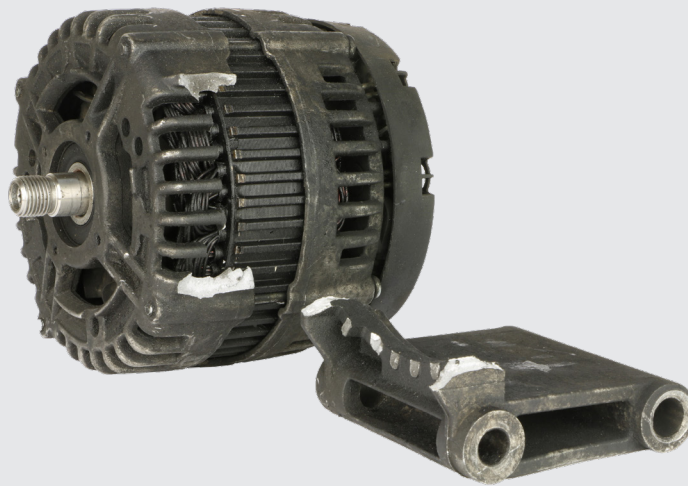


Dismantled



Burnt

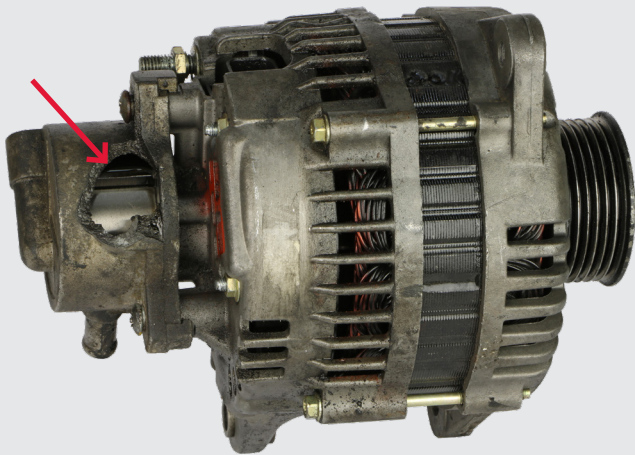


Damaged housing, bracket or fixation

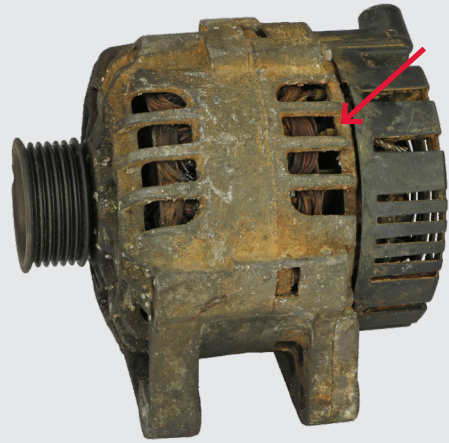
Core acceptance criteria Alternators: Rejected

Rejected

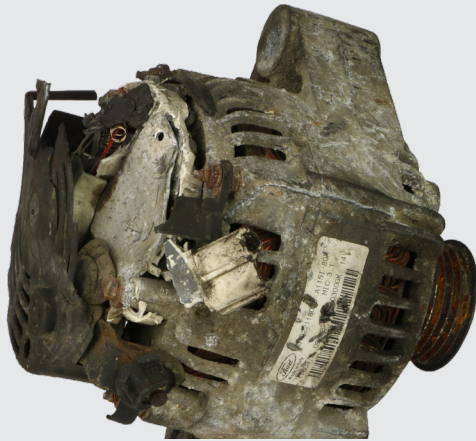
1. Cores must be returned in the original box.
2. Protecting items (caps, covers, foam protectors etc.) must be installed on the core in the same way as they were installed on the remanufactured part.
3. Please view more details on our core acceptance criteria on our homepage.



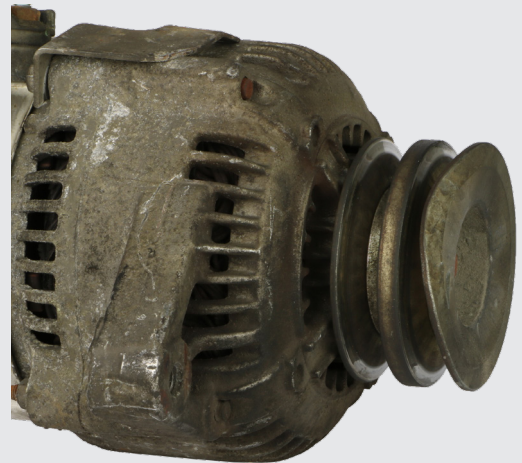
**Damaged / missing
vacuum pump**



Burned stator



**Damaged / missing
rectifier, regulator or cover**



Damaged / missing pulley

Core acceptance criteria Alternators: Reduced

Reduced

1. Cores must be returned in the original box.
2. Protecting items (caps, covers, foam protectors etc.) must be installed on the core in the same way as they were installed on the remanufactured part.
3. Please view more details on our core acceptance criteria on our homepage.